



# KELLENBERG MEMORIAL HIGH SCHOOL

## 2019-2020 SCHOOL PROFILE

### QUICK FACTS

#### ENROLLMENT

TOTAL STUDENTS	2565
FRESHMEN	560
SOPHOMORES	510
JUNIORS	500
SENIORS	480
BRO. JOSEPH C. FOX LATIN SCHOOL (GRADES 6-8)	515



#### STUDENT POPULATION

STUDENTS ARE FROM THREE COUNTIES: NASSAU, SUFFOLK, AND QUEENS. STUDENTS COME FROM 80 SCHOOL DISTRICTS. THE SOCIOECONOMIC BACKGROUND OF KELLENBERG MEMORIAL STUDENTS RANGES FROM MIDDLE TO UPPER MIDDLE CLASS.

#### FACULTY

FACULTY MEMBERS	135
MARIANIST COMMUNITY	15

#### CLASS OF 2019

100% OF THE CLASS OF 2019 GRADUATED ON JUNE 2, 2019.

TOTAL NUMBER OF SCHOLARSHIPS/GRANTS	2940
ACADEMIC SCHOLARSHIPS	2928
ATHLETIC SCHOLARSHIPS	12
TOTAL EARNED IN SCHOLARSHIPS	\$35.7M

STUDENTS ATTENDING COLLEGE	512 (99.2%)
FOUR YEAR COLLEGES	483
TWO YEAR COLLEGES	27
COLLEGE PREPARATORY SCHOOL	2
ENLISTED U.S. MARINE CORPS	1
U.S. NAVY	1
TRADE SCHOOL	1
GAP YEAR	1

#### TUITION

FOR THE 2018-2019 SCHOOL YEAR, TUITION IS \$10,975. THERE ARE NO ADDITIONAL FEES.

#### CONTACT INFORMATION

[KELLENBERG.ORG](http://KELLENBERG.ORG)  
516-292-0200

PRINCIPAL  
BROTHER KENNETH HOAGLAND, S.M.  
[PRINCIPALS@KELLENBERG.ORG](mailto:PRINCIPALS@KELLENBERG.ORG)

ASSISTANT PRINCIPAL FOR ACADEMICS  
MR. KENNETH CONRADE  
[MRCONRADE@KELLENBERG.ORG](mailto:MRCONRADE@KELLENBERG.ORG)



### FOCUS

KELLENBERG MEMORIAL HIGH SCHOOL IS A PRIVATE, INDEPENDENT, CATHOLIC SCHOOL ESTABLISHED IN 1987. IT IS LOCATED NEAR THE MIDDLE OF NASSAU COUNTY, LONG ISLAND, ON A CAMPUS OF TWENTY-ONE ACRES. KELLENBERG MEMORIAL IS OWNED AND OPERATED BY THE BROTHERS AND PRIESTS OF THE MARIANIST COMMUNITY. THE CURRICULUM IS EXCLUSIVELY COLLEGE PREPARATORY. THREE ACADEMIC PROGRAMS PREPARE STUDENTS FOR COLLEGE STUDIES. FINANCIAL CONSTRAINTS DO NOT PERMIT ANY SPECIAL ACADEMIC PROGRAMS OR MODIFICATIONS OF THE REQUIRED CURRICULUM. ADMISSION IS BASED ON THE CATHOLIC HIGH SCHOOL ENTRANCE EXAM.

### ACCREDITATION

KELLENBERG MEMORIAL HIGH SCHOOL IS ACCREDITED BY THE BOARD OF REGENTS OF THE STATE OF NEW YORK AND THE MIDDLE STATES ASSOCIATION OF COLLEGES AND SCHOOLS.

COMPREHENSIVE EXAMS ARE ADMINISTERED IN EACH MAJOR SUBJECT, CONSTITUTING 50% OF FINAL GRADES. REGENTS EXAMS ARE NOT ADMINISTERED.



### GUIDANCE

THIS DEPARTMENT IS STAFFED BY A DIRECTOR OF GUIDANCE EMERITUS, AN ASSISTANT PRINCIPAL, A COLLEGE PLACEMENT OFFICER, FOUR ASSISTANT COLLEGE PLACEMENT COUNSELORS, TWENTY COUNSELORS, A COLLEGE ADMISSIONS LIAISON, A SOCIAL WORKER, AND TWO SECRETARIES. COUNSELORS ARE ASSIGNED TO STUDENTS ON A FOUR YEAR CONTINUUM. ALL GUIDANCE COUNSELORS ARE ALSO MEMBERS OF THE TEACHING FACULTY.

ASSISTANT PRINCIPAL FOR GUIDANCE  
MRS. RUTH MARCONI  
[MRSMARCONI@KELLENBERG.ORG](mailto:MRSMARCONI@KELLENBERG.ORG)

ASSISTANT PRINCIPAL FOR ADMISSIONS  
MR. JOHN BENINTENDI  
[MRBENINTENDI@KELLENBERG.ORG](mailto:MRBENINTENDI@KELLENBERG.ORG)

# CURRICULUM AND ACADEMIC PROGRAMS

## FRESHMEN

### HONORS

SCRIPTURE  
WORLD HISTORY  
ENGLISH 9  
ALGEBRA I  
EARTH SCIENCE  
WORLD LANGUAGE  
PHYSICAL EDUCATION  
MUSIC 9

### ACADEMIC I

SCRIPTURE  
WORLD HISTORY  
ENGLISH 9  
ALGEBRA I  
EARTH SCIENCE  
WORLD LANGUAGE  
PHYSICAL EDUCATION  
MUSIC 9

### ACADEMIC II

SCRIPTURE  
WORLD HISTORY  
ENGLISH 9  
ALGEBRA I  
EARTH SCIENCE  
ENGLISH COMPOSITION I  
PHYSICAL EDUCATION  
MUSIC 9

## JUNIORS

### HONORS

CHRISTIAN MORALITY  
AMERICAN HISTORY I  
ENGLISH 11  
ALGEBRA II &  
TRIGONOMETRY  
CHEMISTRY  
WORLD LANGUAGE  
INTRODUCTION TO MUSIC  
PHYSICAL EDUCATION  
S.A.T. PREPARATION

### ACADEMIC I

CHRISTIAN MORALITY  
AMERICAN HISTORY I  
ENGLISH 11  
ALGEBRA II &  
TRIGONOMETRY  
CHEMISTRY  
WORLD LANGUAGE  
INTRODUCTION TO MUSIC  
PHYSICAL EDUCATION  
S.A.T. PREPARATION

### ACADEMIC II

CHRISTIAN MORALITY  
AMERICAN HISTORY I  
ENGLISH 11  
ALGEBRA II  
CHEMISTRY  
ENGLISH COMPOSITION 3  
ASL 1  
INTRODUCTION TO MUSIC  
PHYSICAL EDUCATION  
S.A.T. PREPARATION

## HONORS PROGRAM

STUDENTS IN THE HONORS PROGRAM TAKE FOUR YEARS OF THE SAME WORLD LANGUAGE. WORLD LANGUAGE OPTIONS ARE LATIN, FRENCH, AND SPANISH. THE HIGHEST LEVEL COURSE AVAILABLE IN ANY SUBJECT IS THE HONORS LEVEL COURSE.

## ACADEMIC I PROGRAM

STUDENTS IN THE ACADEMIC I PROGRAM TAKE THREE YEARS OF THE SAME WORLD LANGUAGE. WORLD LANGUAGE OPTIONS ARE LATIN, FRENCH, AND SPANISH. IN THEIR SENIOR YEAR, STUDENTS TAKE COLLEGE WRITING IN LIEU OF A FOURTH YEAR OF A LANGUAGE.

## ACADEMIC II PROGRAM

STUDENTS IN THE ACADEMIC II PROGRAM TAKE FOUR YEARS OF ENGLISH COMPOSITION AND TWO YEARS OF AMERICAN SIGN LANGUAGE IN ADDITION TO FOUR YEARS OF ENGLISH.

## SOPHOMORES

### HONORS

CHRIST AND HIS CHURCH  
EUROPEAN HISTORY  
ENGLISH 10  
GEOMETRY  
BIOLOGY  
WORLD LANGUAGE  
HEALTH  
HORIZONS &  
TECHNOLOGY  
PHYSICAL EDUCATION

### ACADEMIC I

CHRIST AND HIS CHURCH  
EUROPEAN HISTORY  
ENGLISH 10  
GEOMETRY  
BIOLOGY  
WORLD LANGUAGE  
HEALTH  
HORIZONS &  
TECHNOLOGY  
PHYSICAL EDUCATION

### ACADEMIC II

CHRIST AND HIS CHURCH  
EUROPEAN HISTORY  
ENGLISH 10  
GEOMETRY  
BIOLOGY  
ENGLISH COMPOSITION 2  
HEALTH  
HORIZONS &  
TECHNOLOGY  
PHYSICAL EDUCATION

## SENIORS

### HONORS

CHRISTIAN EXISTENCE  
AMERICAN HISTORY II  
ENGLISH 12  
PRE-CALCULUS OR  
INTRO TO CALCULUS  
PHYSICS  
WORLD LANGUAGE  
ART 12  
ELECTIVES: ADVANCED  
COMPUTER APPLICATIONS,  
DIGITAL MEDIA,  
COMPUTER SCIENCE,  
ART PORTFOLIO  
PREPARATION,  
OR MUSIC THEORY.

### ACADEMIC I

CHRISTIAN EXISTENCE  
AMERICAN HISTORY II  
ENGLISH 12  
PRE-CALCULUS OR  
INTRO TO CALCULUS  
PHYSICS  
COLLEGE WRITING  
ART 12  
ELECTIVES: ADVANCED  
COMPUTER APPLICATIONS,  
DIGITAL MEDIA,  
COMPUTER SCIENCE,  
ART PORTFOLIO  
PREPARATION,  
OR MUSIC THEORY.

### ACADEMIC II

CHRISTIAN EXISTENCE  
AMERICAN HISTORY II  
ENGLISH 12  
STATISTICS & TRIGONOMETRY  
OR PRE-CALCULUS  
PHYSICS  
ENGLISH COMPOSITION 4  
ASL 2  
ART 12  
ELECTIVES: ADVANCED  
COMPUTER APPLICATIONS,  
DIGITAL MEDIA,  
COMPUTER SCIENCE,  
ART PORTFOLIO  
PREPARATION,  
OR MUSIC THEORY.

## ACCELERATED COURSES

STUDENTS ADVANCED IN SCIENCE MAY HAVE THE OPPORTUNITY TO PARTICIPATE IN A SEMINAR OR STUDY ADVANCED BIOLOGY, ENVIRONMENTAL SCIENCE, OR HEALTH SCIENCE. BASED ON PROJECTED COLLEGE COURSE OF STUDY AND HISTORICAL ACADEMIC PERFORMANCE, SENIORS MAY HAVE THE OPPORTUNITY TO STUDY INTRODUCTION TO CALCULUS, STATISTICS, PRE-CALCULUS, OR STATISTICS & TRIGONOMETRY. STUDENTS ADVANCED IN MATH WILL STUDY INTRODUCTION TO CALCULUS DURING THE SENIOR YEAR. STUDENTS ADVANCED IN SCIENCE WILL STUDY ENVIRONMENTAL STUDIES, HEALTH SCIENCE, ENGINEERING, OR ASTRONOMY DURING THE SENIOR YEAR.

## ENRICHMENT & ELECTIVE COURSES

BAND, CHORUS OR ORCHESTRA, ADVANCED COMPUTER APPLICATIONS, DIGITAL MEDIA, COMPUTER SCIENCE, ART PORTFOLIO PREPARATION, AND MUSIC THEORY ARE OFFERED AS A 1/2 UNIT PER YEAR.



## STEM@KMHS

- MANY OF OUR CLUBS AND ACTIVITIES HAVE A STRONG STEM FOCUS: SCIENCE OLYMPIAD, CRIME SCENE INVESTIGATORS, EMT TRAINING, COMPUTER CLUB, WEBSITE & SOCIAL MEDIA CLUB, EDUCATIONAL TELEVISION, AND AMATEUR RADIO CLUB.
- KELLENBERG MEMORIAL HAS A FORMAL PARTNERSHIP WITH NASSAU UNIVERSITY MEDICAL CENTER TO LAUNCH THE HEALTH SCIENCES CLUB, ALLOWING STUDENTS THE OPPORTUNITY TO EXPERIENCE CAREERS AND UNITS WITHIN THE HEALTH FIELD.
- ALL 20 SCIENCE TEACHERS HAVE BECOME MEMBERS OF STANYS - SCIENCE TEACHERS ASSOCIATION OF NEW YORK STATE. DEPARTMENT COORDINATORS ARE MEMBERS OF NSTA - THE NATIONAL SCIENCE TEACHER ASSOCIATION.

## COLLEGE CREDIT

COLLEGE CREDITS ARE AVAILABLE FOR SOME JUNIOR AND SENIOR COURSES THROUGH THE FARMINGDALE STATE COLLEGE PROGRAM, ST. JOHN'S UNIVERSITY COLLEGE ADVANTAGE PROGRAM, HOFSTRA UNIVERSITY, AND MOLLOY COLLEGE SCHOLARS PROGRAM. COURSES INCLUDE:

AMERICAN HISTORY II  
COLLEGE WRITING  
CHRISTIAN EXISTENCE  
FRENCH

INTRO TO CALCULUS  
ENGLISH LITERATURE  
LATIN  
SPANISH

ART PORTFOLIO PREPARATION  
ENGLISH COMPOSITION  
AMERICAN SIGN LANGUAGE  
ASTRONOMY

PHYSICS  
ENVIRONMENTAL STUDIES  
ENGINEERING

## STANDARDIZED TESTING

PSAT SOPHOMORES  
PSAT AND SAT I JUNIORS  
SAT I AND SAT II SENIORS

STUDENTS ARE WELCOME TO TAKE ADVANCED PLACEMENT TESTS IN MAY. HOWEVER, SAT II SUBJECT AREA TESTS ARE ENCOURAGED.

ALL GRADES AND RANKINGS ARE REPORTED NUMERICALLY. 65 IS THE PASSING GRADE. BOTH GRADES AND RANKINGS ARE UNWEIGHTED. RANKINGS ARE CUMULATIVE AND ARE GENERATED AT THE CONCLUSION OF JUNIOR YEAR.

STUDENTS WHO ACHIEVE AN AVERAGE OF 85% (84.5%) OR BETTER ON THEIR GRADES FOR THE FIRST TRIMESTER, SECOND TRIMESTER, AND THE ENDING OF THE YEAR HAVE THEIR NAMES LISTED ON THE KELLENBERG MEMORIAL HONOR ROLL. THE KELLENBERG MEMORIAL CHAPTER OF THE NATIONAL HONOR SOCIETY SEEKS TO CREATE AN ENTHUSIASM FOR SCHOLARSHIP, TO STIMULATE LEADERSHIP, AND TO ENCOURAGE THE DEVELOPMENT OF GOOD CHARACTER. JUNIORS AND SENIORS WHO ACHIEVE AN AVERAGE OF 85% (84.5%) OR BETTER AND PARTICIPATE IN AT LEAST 2 ACTIVITIES OR SPORTS QUALIFY TO BECOME A MEMBER OF THE NATIONAL HONOR SOCIETY.

## EDUCATIONAL TECHNOLOGY

WI-FI IS ACCESSIBLE THROUGHOUT THE ENTIRE BUILDING.  
ALL STUDENTS ARE SUPPLIED WITH AN IPAD IN LIEU OF TRADITIONAL TEXTBOOKS.

## ACTIVITIES

KELLENBERG MEMORIAL SPONSORS OVER 80 CO-CURRICULAR AND EXTRACURRICULAR CLUBS AND ACTIVITIES. 74% OF THE HIGH SCHOOL STUDENTS PARTICIPATE IN ONE OR MORE OF THESE CLUBS AND ACTIVITIES. 92% OF ALL HIGH SCHOOL STUDENTS PARTICIPATE IN AT LEAST ONE CLUB OR ONE SPORT. PARTICIPATION IN EXTRACURRICULAR CLUBS AND ACTIVITIES IS AN ESSENTIAL PART OF THE KELLENBERG MEMORIAL EXPERIENCE. STUDENTS HAVE THE OPPORTUNITY TO BECOME INVOLVED IN ONE OR MORE OF 80 DIFFERENT COCURRICULAR OR EXTRACURRICULAR ACTIVITIES. SOME OF THE ACTIVITIES ARE:

### COCURRICULAR ACTIVITIES

- ART GUILD
- BAG PIPE CLUB
- BAND
- BOOK CLUB
- CHAMBER MUSIC SOCIETY
- CHORUS
- FIDDLE CLUB
- HISTORY CLUB
- JAZZ BAND
- JAZZ CHOIR
- LANGUAGE CLUBS
- LITERARY MAGAZINE (RENAISSANCE)
- MODEL UN
- MOCK TRIAL
- ORCHESTRA
- PEP BAND
- PIT BAND
- SPEECH AND DEBATE CLUB

### EXTRACURRICULAR ACTIVITIES

- AUDITORIUM SERVICE
- BOOKSTORE STAFF
- CHESS CLUB
- COMMUNICATIONS CLUB
- CRAFTS CLUB
- CULINARY CLUB
- DIVISIONAL NEWSPAPER
- DRAMA CLUB
- GENERAL STUDENT ORGANIZATION
- GUITAR CLUB
- HIKING CLUB
- NATIONAL HONOR SOCIETY
- NATIONAL JUNIOR HONOR SOCIETY
- NEWSPAPER (PHOENIX)
- PHOTOGRAPHY CLUB
- YEARBOOK (BLUE & GOLD)

### STEM ACTIVITIES

- ACADEMIC QUIZ BOWL
- AMATEUR RADIO CLUB
- BOY SCOUTS OF AMERICA
- BUSINESS & FINANCE CLUB
- COMPUTER CLUB
- C.S.I. CLUB
- EMT TRAINING PROGRAM
- ENVIRONMENTAL CLUB
- EDUCATIONAL TELEVISION SERVICE
- HEALTH SCIENCES CLUB
- LABORATORY SQUAD
- MATHEMATICS CLUB
- ROBOTICS CLUB
- SCIENCE OLYMPIAD TEAM
- WEBSITE AND SOCIAL MEDIA CLUB
- WOODWORKING CLUB
- PROFESSIONAL IN-HOUSE PRESENTATIONS



## ATHLETICS

KELLENBERG MEMORIAL SPONSORS 60 OFFICIAL INTERSCHOLASTIC ATHLETIC TEAMS. 62% OF ALL HIGH SCHOOL STUDENTS PARTICIPATE IN AT LEAST ONE SPORT. FURTHERMORE, A LARGE NUMBER OF STUDENTS PARTICIPATE IN INTRAMURAL PROGRAMS. THE MARIANIST PHILOSOPHY AS IT PERTAINS TO ATHLETICS IS "EDUCATE THE WHOLE STUDENT - HEART, MIND, AND THE BODY." KELLENBERG ATHLETIC TEAMS PARTICIPATE IN ARGUABLY THE MOST COMPETITIVE ATHLETIC LEAGUES IN THE COUNTRY. KELLENBERG MEMORIAL HOSTS RECENTLY RENOVATED, STATE OF THE ART ATHLETIC FACILITIES FOR THESE TEAMS AS WELL. THE TEAMS INCLUDE:

### INTERSCHOLASTIC ACTIVITIES

- BASEBALL - BOYS
- BASKETBALL - GIRLS & BOYS
- BOWLING - GIRLS & BOYS
- CHEERLEADING - GIRLS
- CREW - GIRLS & BOYS
- CROSS COUNTRY - GIRLS & BOYS
- DANCE TEAM - GIRLS
- FOOTBALL - BOYS
- GOLF - GIRLS & BOYS

- HOCKEY - BOYS
- LACROSSE - GIRLS & BOYS
- SOCCER - GIRLS & BOYS
- SOFTBALL - GIRLS
- SWIMMING - GIRLS & BOYS
- TENNIS - BOYS & GIRLS
- TRACK - GIRLS & BOYS
- VOLLEYBALL - GIRLS & BOYS
- WRESTLING - BOYS

### ATHLETIC CLUBS

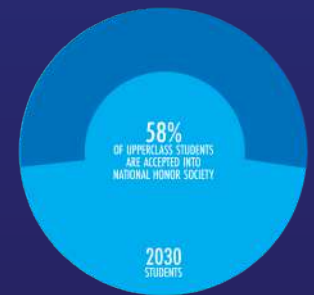
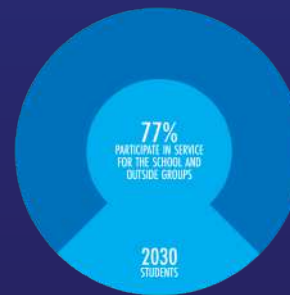
- ARCHERY CLUB
- BLUE AND GOLD
- EQUESTRIAN CLUB
- FITNESS CLUB
- GIRLS GOLF CLUB
- MANAGERS CLUB
- RUGBY CLUB
- SENIOR SPIRIT COMMITTEE

## LEADING THROUGH SERVICE

IN ADDITION TO THE ACADEMIC AND EXTRACURRICULAR PROGRAMS AT KELLENBERG MEMORIAL, STUDENTS ALSO SHARE IN A FAITH EXPERIENCE WITHIN THE CONTEXT OF A CATHOLIC SCHOOL COMMUNITY. ALL ACTIVITIES, BOTH INSIDE AND OUTSIDE OF THE CLASSROOM, ARE CARRIED OUT IN THE SPIRIT OF THE GOSPEL OF JESUS CHRIST. THROUGH THE SPIRITUAL DIMENSION OF THEIR EDUCATION, STUDENTS GROW INTO MATURE, CHRISTIAN MEN AND WOMEN. RETREAT PROGRAMS ARE HELD IN EMMANUEL RETREAT HOUSE ON CAMPUS, AT STELLA MARIS RETREAT HOUSE IN ISLIP, NEW YORK AND AT FOUNDER'S HOLLOW, A MARIANIST RETREAT FACILITY IN UPSTATE NEW YORK. THE FOLLOWING PROGRAMS CONTRIBUTE TO THE FAITH DIMENSION OF KELLENBERG MEMORIAL HIGH SCHOOL:

- COMMUNITY MARIANIST LEADERS
- COMMUNITY SERVICE
- C.R.O.S.S. DIVISIONS
- DAILY MORNING MASS
- DIVISIONAL PRAYER SERVICES
- EUCHARISTIC MINISTERS
- FOUNDERS KEEPERS
- GREGORIAN CONSORTIUM
- JUBILEE CHOIR
- PARISH RELIGIOUS EDUCATION PROGRAM
- RETREAT STAFF
- SACRISTANS
- SODALITY
- S.M.A.R.T. (ST. MARTIN'S AFTERSCHOOL RECREATION & TUTORING)
- S.A.L.T. (SERVICE, ALLEGIANCE, LEADERSHIP, TEAMWORK)
- ST. CECILIA'S RECORDING CLUB
- ST. THOMAS AQUINAS LEAGUE
- USHERS
- XLT

NO SERVICE HOURS ARE REQUIRED FOR STUDENTS, YET 77% OF STUDENTS PARTICIPATE IN A SERVICE ACTIVITY, BOTH AT SCHOOL AND WITH OUTSIDE ORGANIZATIONS. LEADERSHIP IS CULTIVATED THROUGH SERVICE, AND AS STUDENTS REACH THEIR JUNIOR AND SENIOR YEARS, MANY OPPORTUNITIES ARISE TO ASSUME LEADERSHIP ROLES WITHIN THE SCHOOL COMMUNITY. PEER LEADERSHIP DRIVES MANY ACTIVITIES AND EVENTS. MEMBERS OF THE FACULTY GUIDE AND DEVELOP LEADERSHIP SKILLS THAT WILL LAST A LIFETIME.



# COLLEGES THE CLASS OF 2019 WERE ACCEPTED TO

100% OF KELLENBERG MEMORIAL HIGH SCHOOL GRADUATES ARE ACCEPTED TO A 4-YEAR COLLEGE. 5488 COLLEGE APPLICATIONS WERE PROCESSED FOR THE CLASS OF 2019, THAT IS, AN AVERAGE OF 10.7 APPLICATIONS PER SENIOR.

- ADELPHI UNIVERSITY  
 ALBANY COLLEGE OF PHARMACY  
 AND HEALTH SCIENCES  
 ALBRIGHT COLLEGE  
 ALFRED UNIVERSITY  
 ALVERNIA UNIVERSITY  
 AMERICAN MUSICAL AND  
 DRAMATIC ACADEMY  
 AMERICAN UNIVERSITY  
 ANNA MARIA COLLEGE  
 ARCADIA UNIVERSITY  
 ARIZONA STATE UNIVERSITY  
 ASSUMPTION COLLEGE  
 AUBURN UNIVERSITY  
 AVE MARIA UNIVERSITY  
 BARD COLLEGE  
 BARUCH COLLEGE OF THE CUNY  
 BAYLOR UNIVERSITY  
 BECKER COLLEGE  
 BELHAVEN UNIVERSITY  
 BELMONT UNIVERSITY  
 BENEDICTINE UNIVERSITY  
 BENTLEY UNIVERSITY  
 BERKLEE COLLEGE OF MUSIC  
 BOSTON COLLEGE  
 BOSTON UNIVERSITY  
 BRYANT UNIVERSITY  
 BUCKNELL UNIVERSITY  
 BUTLER UNIVERSITY  
 CABRINI UNIVERSITY  
 CALIFORNIA STATE UNIVERSITY -  
 SAN MARCOS  
 CANISIUS COLLEGE  
 CASE WESTERN RESERVE UNIVERSITY  
 CATHOLIC UNIVERSITY OF AMERICA  
 CHAMPLAIN COLLEGE  
 CHESTNUT HILL COLLEGE  
 CHRISTIAN BROTHERS UNIVERSITY  
 CLARK ATLANTA UNIVERSITY  
 CLARK UNIVERSITY  
 CLEMSON UNIVERSITY  
 COASTAL CAROLINA UNIVERSITY  
 COLGATE UNIVERSITY  
 COLLEGE OF CHARLESTON  
 COLLEGE OF MOUNT SAINT VINCENT  
 COLLEGE OF NEW JERSEY  
 COLLEGE OF SAINT ELIZABETH  
 COLLEGE OF SAINT ROSE  
 COLLEGE OF THE HOLY CROSS  
 COLLEGE OF WILLIAM & MARY  
 COLUMBIA COLLEGE CHICAGO  
 CONCORDIA COLLEGE - NEW YORK  
 CONNECTICUT COLLEGE  
 CORNELL UNIVERSITY  
 CREIGHTON UNIVERSITY  
 CUNY - LaGUARDIA  
 CUNY - BROOKLYN  
 CUNY - CITY COLLEGE  
 CUNY - HUNTER  
 CUNY - JOHN JAY  
 CUNY - LEHMAN  
 CUNY - MacAULEY HONORS COLLEGE  
 CUNY - NEW YORK CITY COLLEGE  
 OF TECHNOLOGY  
 CUNY - QUEENS  
 CUNY - QUEENSBOROUGH  
 CUNY - STATEN ISLAND  
 CUNY - YORK  
 CURRY COLLEGE  
 DAEMEN COLLEGE  
 DELAWARE VALLEY UNIVERSITY  
 DePAUL UNIVERSITY  
 DeSALES UNIVERSITY  
 DOMINICAN COLLEGE  
 DREW UNIVERSITY  
 DREXEL UNIVERSITY  
 DUKE UNIVERSITY  
 DUQUESNE UNIVERSITY  
 EAST CAROLINA UNIVERSITY  
 EAST STROUDSBURG UNIVERSITY  
 OF PENNSYLVANIA  
 EASTERN NAZARENE COLLEGE  
 ECKERD COLLEGE  
 ELIZABETHTOWN COLLEGE  
 ELON UNIVERSITY  
 EMBRY-RIDDLE AERONAUTICAL  
 UNIVERSITY  
 EMERSON COLLEGE  
 EMMANUEL COLLEGE  
 ENDICOTT COLLEGE  
 FAIRFIELD UNIVERSITY  
 FASHION INSTITUTE OF TECHNOLOGY  
 FLORIDA A&M UNIVERSITY  
 FLORIDA ATLANTIC UNIVERSITY  
 FLORIDA GULF COAST UNIVERSITY  
 FLORIDA SOUTHERN COLLEGE  
 FLORIDA STATE UNIVERSITY  
 FORDHAM UNIVERSITY  
 FRANCISCAN UNIVERSITY OF  
 STEUBENVILLE  
 FRANKLIN PIERCE UNIVERSITY  
 GANNON UNIVERSITY  
 GEORGE MASON UNIVERSITY  
 GEORGE WASHINGTON UNIVERSITY  
 GETTYSBURG COLLEGE  
 GLOBAL COLLEGE AT  
 LONG ISLAND UNIVERSITY  
 HAMPTON UNIVERSITY  
 HARTWICK COLLEGE  
 HAVERFORD COLLEGE  
 HAWAII PACIFIC UNIVERSITY  
 HIGH POINT UNIVERSITY  
 HOBART AND WILLIAM SMITH  
 COLLEGES  
 HOFSTRA UNIVERSITY  
 HOLY NAMES UNIVERSITY  
 INDIANA UNIVERSITY AT BLOOMINGTON  
 IONA COLLEGE  
 IOWA STATE UNIVERSITY  
 ITHACA COLLEGE  
 JAMES MADISON UNIVERSITY  
 JOHN CARROLL UNIVERSITY  
 JOHN HOPKINS UNIVERSITY  
 JOHNSON & WALES UNIVERSITY  
 KEENE STATE COLLEGE  
 KENT STATE UNIVERSITY  
 KEUKA COLLEGE  
 KING'S COLLEGE  
 LA SALLE UNIVERSITY  
 LAFAYETTE COLLEGE  
 LE MOYNE COLLEGE  
 LEHIGH UNIVERSITY  
 LESLEY UNIVERSITY  
 LIM COLLEGE  
 LIPSCOMB UNIVERSITY  
 LONG ISLAND UNIVERSITY - BROOKLYN  
 LONG ISLAND UNIVERSITY - POST  
 LOUISIANA STATE UNIVERSITY  
 LOYOLA MARYMOUNT UNIVERSITY  
 LOYOLA UNIVERSITY CHICAGO  
 LOYOLA UNIVERSITY MARYLAND  
 LOYOLA UNIVERSITY NEW ORLEANS  
 LYCOMING COLLEGE  
 LYNN UNIVERSITY  
 MANHATTAN COLLEGE  
 MANHATTANVILLE COLLEGE  
 MARIST COLLEGE  
 MARQUETTE UNIVERSITY  
 MARYMOUNT MANHATTAN COLLEGE  
 MARYMOUNT UNIVERSITY  
 MARYWOOD UNIVERSITY  
 McDANIEL COLLEGE  
 MCPHS - MASSACHUSETTS COLLEGE  
 OF PHARMACY & HEALTH SCIENCES  
 MERCY COLLEGE  
 MERRIMACK COLLEGE  
 MESSIAH COLLEGE  
 MIAMI UNIVERSITY - OXFORD  
 MICHIGAN STATE UNIVERSITY  
 MILLERSVILLE UNIVERSITY OF  
 PENNSYLVANIA  
 MISERICORDIA UNIVERSITY  
 MOLLOY COLLEGE  
 MONMOUTH UNIVERSITY  
 MORAVIAN COLLEGE  
 MOUNT SAINT MARY COLLEGE  
 MOUNT ST. MARY'S UNIVERSITY  
 MUHLENBERG COLLEGE  
 NASSAU COMMUNITY COLLEGE  
 NEUMANN UNIVERSITY  
 NEW ENGLAND COLLEGE  
 NEW JERSEY INSTITUTE OF TECHNOLOGY  
 NEW YORK INSTITUTE OF TECHNOLOGY  
 NEW YORK UNIVERSITY  
 NIAGARA UNIVERSITY  
 NORTH CAROLINA A&T STATE  
 UNIVERSITY  
 NORTH CAROLINA STATE UNIVERSITY  
 NORTHEASTERN UNIVERSITY  
 NORTHWESTERN UNIVERSITY  
 NORWICH UNIVERSITY  
 NOVA SOUTHEASTERN UNIVERSITY  
 OHIO STATE UNIVERSITY  
 OHIO UNIVERSITY  
 OREGON STATE UNIVERSITY  
 PACE UNIVERSITY  
 PENNSYLVANIA STATE UNIVERSITY  
 POST UNIVERSITY  
 PROVIDENCE COLLEGE  
 PURDUE UNIVERSITY  
 QUINNIPIAC UNIVERSITY  
 RENSSELAER POLYTECHNIC INSTITUTE  
 RICE UNIVERSITY  
 RIDER UNIVERSITY  
 ROCHESTER INSTITUTE OF TECHNOLOGY  
 ROGER WILLIAMS UNIVERSITY  
 RUTGERS UNIVERSITY - NEW BRUNSWICK  
 SACRED HEART COLLEGE  
 SACRED HEART UNIVERSITY  
 SAINT ANSELME COLLEGE  
 SAINT FRANCIS UNIVERSITY  
 SAINT JOSEPH'S UNIVERSITY  
 SAINT LEO UNIVERSITY  
 SAINT MARY'S COLLEGE  
 SAINT MICHAEL'S COLLEGE  
 SAINT PETER'S UNIVERSITY  
 SALISBURY UNIVERSITY  
 SALVE REGINA UNIVERSITY  
 SAN DIEGO STATE UNIVERSITY  
 SAVANNAH COLLEGE OF ART AND DESIGN  
 SCHOOL OF VISUAL ARTS  
 SETON HALL UNIVERSITY  
 SETON HILL UNIVERSITY  
 SHENANDOAH UNIVERSITY  
 SIENA COLLEGE  
 SIMMONS UNIVERSITY  
 SKIDMORE COLLEGE  
 SOUTHERN CONNECTICUT STATE  
 UNIVERSITY  
 SPRINGFIELD COLLEGE  
 ST. BONAVENTURE UNIVERSITY  
 ST. EDWARD'S UNIVERSITY  
 ST. JOHN FISHER COLLEGE  
 ST. JOHN'S UNIVERSITY  
 ST. JOSEPH'S COLLEGE  
 ST. NORBERT COLLEGE  
 ST. THOMAS AQUINAS COLLEGE  
 STANFORD UNIVERSITY  
 STEVENS INSTITUTE OF TECHNOLOGY  
 STEVENSON UNIVERSITY  
 STONEHILL COLLEGE  
 SUFFOLK UNIVERSITY  
 SUNY ALBANY  
 SUNY ALFRED STATE COLLEGE  
 SUNY BINGHAMTON UNIVERSITY  
 SUNY BROCKPORT  
 SUNY BUFFALO STATE COLLEGE  
 SUNY BUFFALO UNIVERSITY  
 SUNY CANTON  
 SUNY COBLESKILL  
 SUNY CORTLAND  
 SUNY DELHI  
 SUNY FARMINGDALE  
 SUNY FREDONIA  
 SUNY GENESEO  
 SUNY MARITIME COLLEGE  
 SUNY NEW PALTZ  
 SUNY OLD WESTBURY  
 SUNY ONEONTA  
 SUNY OSWEGO  
 SUNY PLATTSBURGH  
 SUNY POLYTECHNIC INSTITUTE  
 SUNY POTSDAM  
 SUNY PURCHASE  
 SUNY STONY BROOK  
 SUSQUEHANNA UNIVERSITY  
 SYRACUSE UNIVERSITY  
 TEMPLE UNIVERSITY  
 TEXAS CHRISTIAN UNIVERSITY  
 TOWSON UNIVERSITY  
 TULANE UNIVERSITY  
 U.S. MARINE CORPS  
 UNION COLLEGE - NEW YORK  
 UNITED STATES MERCHANT MARINE  
 ACADEMY  
 UNITED STATES NAVAL ACADEMY  
 UNITED STATES NAVAL ACADEMY  
 PREP SCHOOL  
 UNIVERSITY OF ALABAMA  
 UNIVERSITY OF ALABAMA AT  
 BIRMINGHAM  
 UNIVERSITY OF ARIZONA  
 UNIVERSITY OF BRIDGEPORT  
 UNIVERSITY OF CENTRAL FLORIDA  
 UNIVERSITY OF CINCINNATI  
 UNIVERSITY OF COLORADO AT  
 BOULDER  
 UNIVERSITY OF CONNECTICUT  
 UNIVERSITY OF DAYTON  
 UNIVERSITY OF DELAWARE  
 UNIVERSITY OF DENVER  
 UNIVERSITY OF FLORIDA  
 UNIVERSITY OF HARTFORD  
 UNIVERSITY OF ILLINOIS AT  
 URBANA-CHAMPAIGN  
 UNIVERSITY OF IOWA  
 UNIVERSITY OF KANSAS  
 UNIVERSITY OF KENTUCKY  
 UNIVERSITY OF MAINE  
 UNIVERSITY OF MARY WASHINGTON  
 UNIVERSITY OF MARYLAND -  
 BALTIMORE COUNTY  
 UNIVERSITY OF MARYLAND -  
 COLLEGE PARK  
 UNIVERSITY OF MASSACHUSETTS -  
 AMHERST  
 UNIVERSITY OF MASSACHUSETTS,  
 BOSTON  
 UNIVERSITY OF MASSACHUSETTS -  
 DARTMOUTH  
 UNIVERSITY OF MASSACHUSETTS -  
 LOWELL  
 UNIVERSITY OF MIAMI  
 UNIVERSITY OF MICHIGAN  
 UNIVERSITY OF MISSOURI COLUMBIA  
 UNIVERSITY OF NEW HAMPSHIRE  
 UNIVERSITY OF NEW HAVEN  
 UNIVERSITY OF NEW ORLEANS  
 UNIVERSITY OF NORTH CAROLINA -  
 CHAPEL HILL  
 UNIVERSITY OF NORTH CAROLINA -  
 CHARLOTTE  
 UNIVERSITY OF NORTH CAROLINA -  
 WILMINGTON  
 UNIVERSITY OF NORTH GEORGIA  
 UNIVERSITY OF NOTRE DAME  
 UNIVERSITY OF OREGON  
 UNIVERSITY OF PITTSBURGH  
 UNIVERSITY OF RHODE ISLAND  
 UNIVERSITY OF RICHMOND  
 UNIVERSITY OF ROCHESTER  
 UNIVERSITY OF SAN DIEGO  
 UNIVERSITY OF SCRANTON  
 UNIVERSITY OF SOUTH CAROLINA  
 UNIVERSITY OF SOUTH FLORIDA -  
 TAMPA  
 UNIVERSITY OF TAMPA  
 UNIVERSITY OF TENNESSEE -  
 KNOXVILLE  
 UNIVERSITY OF TOLEDO  
 UNIVERSITY OF VERMONT  
 UNIVERSITY OF VIRGINIA  
 UNIVERSITY OF WASHINGTON  
 UNIVERSITY OF WISCONSIN -  
 MADISON  
 UTICA COLLEGE  
 VASSAR COLLEGE  
 VAUGHN COLLEGE OF AERONAUTICS  
 AND TECHNOLOGY  
 VERMONT TECHNICAL COLLEGE  
 VILLA MARIA COLLEGE OF BUFFALO  
 VILLANOVA UNIVERSITY  
 VIRGINIA COMMONWEALTH  
 UNIVERSITY  
 VIRGINIA TECH  
 WAGNER COLLEGE  
 WAKE FOREST UNIVERSITY  
 WASHINGTON UNIVERSITY IN  
 ST. LOUIS  
 WENTWORTH INSTITUTE OF  
 TECHNOLOGY  
 WESLEYAN UNIVERSITY  
 WEST CHESTER UNIVERSITY OF  
 PENNSYLVANIA  
 WEST VIRGINIA UNIVERSITY  
 WESTERN NEW ENGLAND UNIVERSITY  
 WILKES UNIVERSITY  
 WILLIAMS COLLEGE  
 WILSON COLLEGE  
 WORCESTER POLYTECHNIC INSTITUTE  
 XAVIER UNIVERSITY  
 YORK COLLEGE OF PENNSYLVANIA

